

VMKFAV1251 "KIT Ø125" for Ø125 adapters on false ceiling - AIRPIÚ system

"KIT Ø125 " FOR SUPPORTING AND FIXING A "CEILING Ø125 ADAPTER" OR A Ø125 RIGID/FLEXIBLE PIPE UPON FALSE CEILING

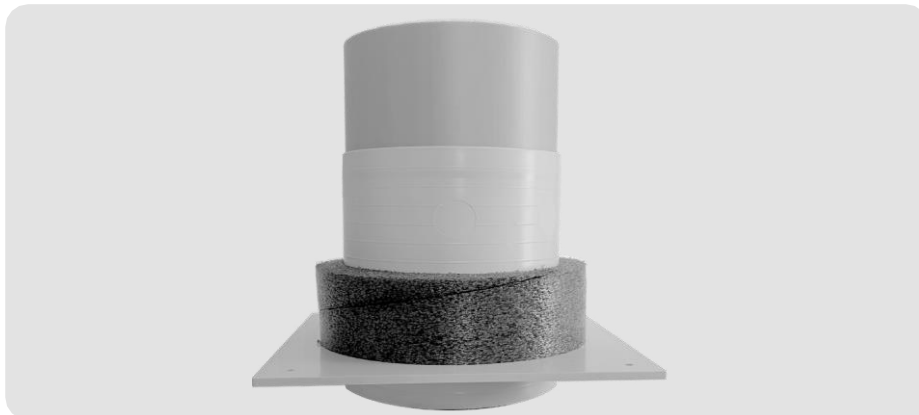


FIG.3

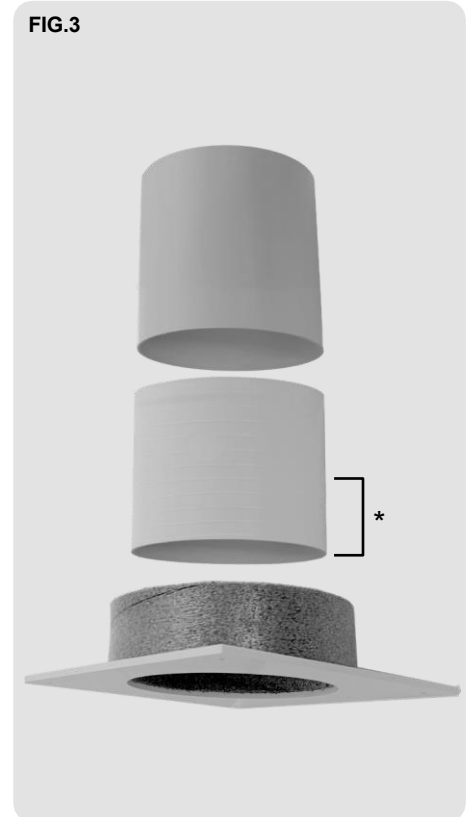


FIG.1



FIG.2



[fig. 1] Example of a "KIT Ø125" with a "ceiling Ø125 adapter"

[fig. 2] Telescopic extension of "KIT Ø125" in its maximum possible range below the plate of "KIT Ø125" (equal to 60 mm plasterboard thickness)

[fig.3] Picture of the three divided components of the kit (from the top: PP tube, telescopic extension, PVC thick. 4mm plate with glued EPE ring).

**It is recommended to leave an inner space of at least 38 mm unoccupied by the telescopic extension to allow for the housing of the Ø125 ventilation valve or diffuser*

FEATURES

Kit, for false ceiling, useful to support and fix Ø125 adapters/pipes and to fix Ø125 ventilation valves or diffusers.

The kit has a dual function:

- It allows the adapter "VMAVC75AP" or "VMAVC90AP" to be fixed on the extrados of the false ceiling, by placing the "PVC plate" on the plasterboard and fixing it, for example using screws (not supplied) or by gluing or with another system [fig. 1].
- Allows a pipe (flexible or not) having Ø_{int.}125 mm or larger to be attached to it. The "PP tube" and the "telescopic extension" allow both to be cut to the desired length.

If necessary, part of the EPE ring can also be cut.

In case it is necessary to achieve a height greater than 240 mm between the false ceiling and the back of the adapter (which has net height of 90 mm) use a VMAVCPRO series adapter.

It is recommended to cover the adapter-pipe-extension joints with duct tape.

NOTE. The adapters "VMAVC75AP" and "VMAVC90AP" (referred to in Fig.1) or "VMAVCPRO(75/90)AP" do not come with the kit. See also the relevant data sheets and in general the AIRPIÚ system data sheets.

